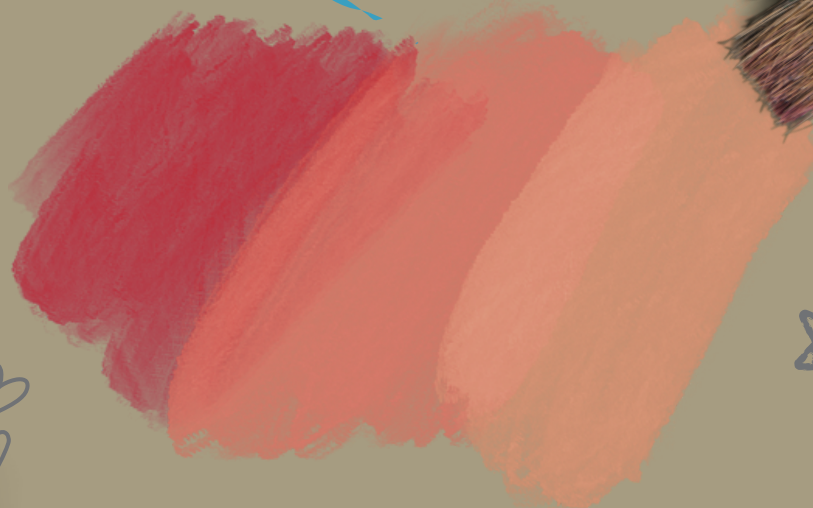


MASO



Mechanicsburg



art racks!



2 0 2 3 - 2 0 2 4

S C H O O L

C A L E N D A R



MECHANICSBURG AREA SCHOOLS

DISTRICT OFFICE

600 S Norway St, 2nd Floor
Telephone: 691-4500
Registration Fax: 506-1801
Business Office: 691-3253
Parks and Recreation: 691-4572
Transportation: 691-4517

ELMWOOD ACADEMY

(GRADES 4-5)
100 E Elmwood Ave
Telephone: 691-4578
Fax: 697-3655

SHEPHERDSTOWN ELEMENTARY

(GRADES 1-3)
1849 S York St
Telephone: 691-4589
Fax: 691-2474

MECHANICSBURG AREA SENIOR HIGH SCHOOL (GRADES 9-12)

500 S Broad St
Telephone: 691-4530
Fax: 691-7632
Attendance: 691-4542
Counseling Services: 691-4543
Counseling Fax: 691-4532
Athletic Department: 691-4538

BROAD STREET ELEMENTARY (GRADES 1-3)

200 S Broad St
Telephone: 691-4574
Fax: 697-7392

UPPER ALLEN ELEMENTARY (GRADES 1-3)

1790 S Market St
Telephone: 691-4594
Fax: 697-9107

MECHANICSBURG MIDDLE SCHOOL (GRADES 6-8)

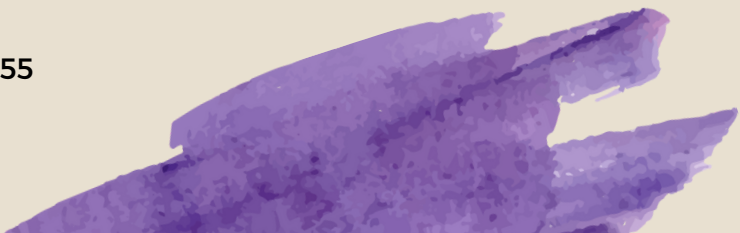
1750 S Market St
Telephone: 691-4560
Fax: 791-7977
Attendance: 691-2452
Counseling Services: 691-2455
Counseling Fax: 691-2478

NORTHSIDE ELEMENTARY (GRADES 1-3)

411 N Walnut St
Telephone: 691-4581
Fax: 697-8674

KINDERGARTEN ACADEMY

600 S Norway St, 1st Floor
Telephone: 506-0852
Fax: 506-0853



AUGUST
2023



Lucy Alonso

Self Portrait



Visit the District Activity
Calendar at www.mbgd.org for
an up-to-date listing of all
district events and activities and
gomechanicsburg.com for all
Athletic schedules and
livestream opportunities

Su

Mo

Tu

We

Th

Fr

Sa

		01	02	03	04	05
06	07	08 School Board Meeting 7pm	09	10	11	12
13	14	15	16	17	18	19
20	21 Staff Opening Day 1	22 Staff Opening Day 2 BS,NS,SP,UA - Class Visitations 3-4pm Finance & Facilities Meeting 6pm School Board Work Session 7pm	23 Staff Opening Day 3 (PD Day) EW-Class Visitations KA-Orientation	24	25	26
27	28 FIRST DAY OF SCHOOL (Grades 4-12) STAGGERED START (Grades K-3)	29 STAGGERED START (Grades K-3)	30	31		
				<ul style="list-style-type: none"> • BS - Broad Street • NS - Northside • SP - Shepherdstown • UA - Upper Allen • KA - Kindergarten • EW - Elmwood • MS - Middle School • HS - High School 		

SEPTEMBER
2023



Abigail Mast

A Rainbow in Nature



Visit the District Activity Calendar at www.mbgd.org for an up-to-date listing of all district events and activities and gomechanicsburg.com for all Athletic schedules and livestream opportunities



Su

Mo

Tu

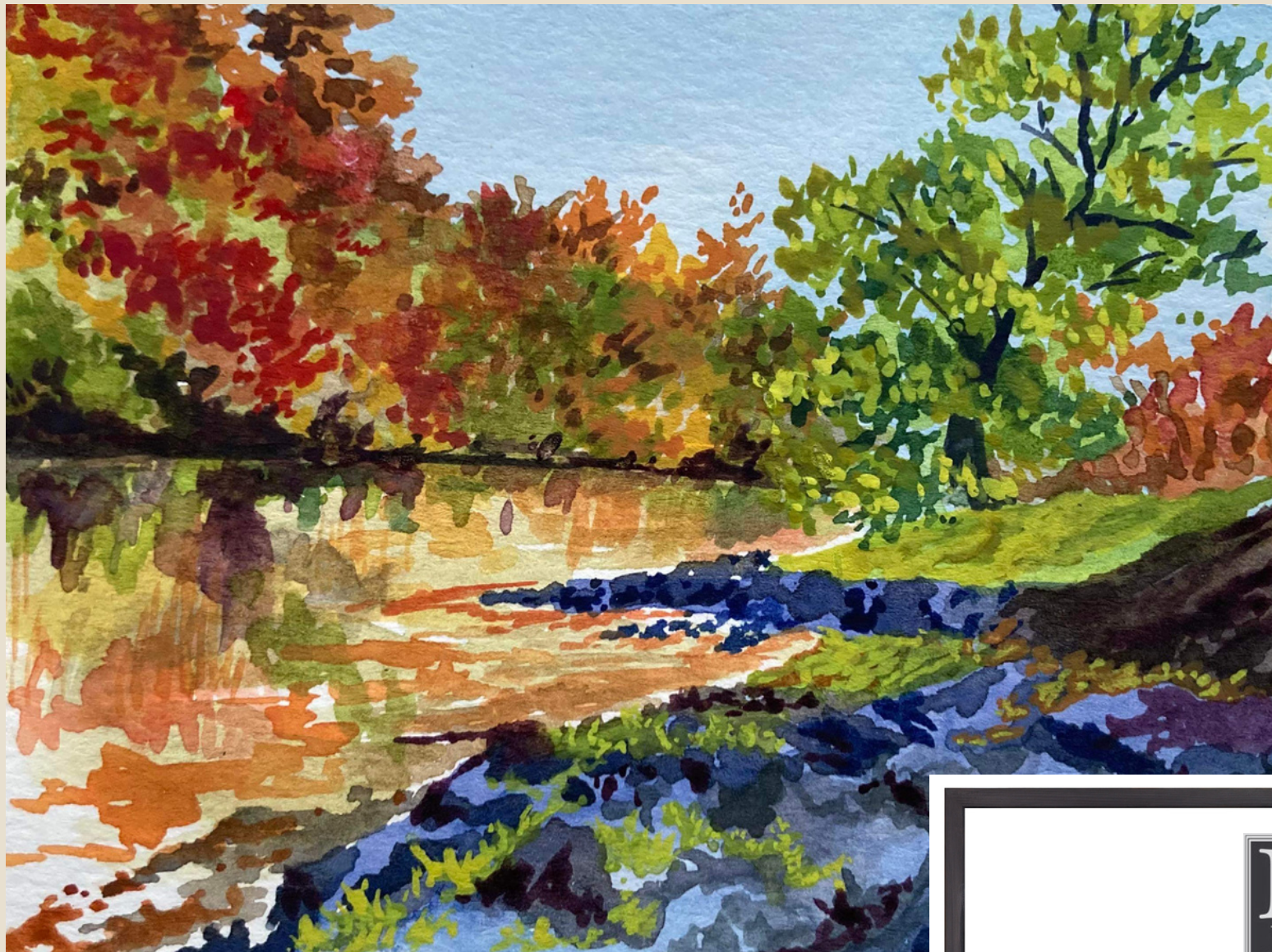
We

Th

Fr

Sa

					01 SCHOOL CLOSED	02
03	04 SCHOOL CLOSED	05 BS-PTO Mtg 6:30pm NS-PTO Mtg 7pm UA-PTO Mtg 7pm	06 MS-Back to School Night	07 BS,NS,SP,UA-Back to School Night 6-7:30pm HS-Fall Back to School Night	08	09
10 BS-Back to School Social 3-5pm	11	12 School Board Meeting 7pm	13 SP-PTO Mtg 7pm	14 EW-Back to School Night 6-7:30pm	15	16
17	18	19 KA-PTO Mtg 6:30pm	20	21 KA-Curriculum Night 6-7pm	22 UA-Bingo Night 6-7:30pm	23
24	25 EW-PTO Mtg 7pm UA-Picture Day	26 Finance & Facilities Meeting 6pm School Board Work Session 7pm	27	28	29	30
				<ul style="list-style-type: none"> • BS - Broad Street • NS - Northside • SP - Shepherdstown • UA - Upper Allen • KA - Kindergarten • EW - Elmwood • MS - Middle School • HS - High School 		



Visit the District Activity Calendar at www.mbgd.org for an up-to-date listing of all district events and activities and gomechanicsburg.com for all Athletic schedules and livestream opportunities

OCTOBER
2023



Eden King

Fall Landscape

Su

Mo

Tu

We

Th

Fr

Sa

01	02	03 School Board Meeting 7pm NS-PTO Mtg 7pm UA-PTO Mtg 7pm	04 BS-Walk to School Day	05	06 Act 80 Day NO STUDENTS (K-12) Homecoming Football Game	07 Homecoming Dance
08	09 SCHOOL CLOSED	10	11 SP-PTO Mtg 7pm	12 NS-Family Fun Night 6-7pm SP-Family Fun Night 6-7pm HS-Parent Teacher Conferences	13	14
15	16	17 KA-PTO Mtg 6:30pm	18 EW-Picture Day	19 EW-Parent Teacher Conferences 3-7:30pm	20	21
22	23 EW-PTO Mtg 7pm	24 Finance & Facilities Meeting 6pm School Board Work Session 7pm EW-Parent Teacher Conferences 3-7pm	25 KA,BS,NS,SP,UA-Parent Teacher Conferences 3-7:30pm	26	27 Act 80 Day NO STUDENTS (K-12) K-5 Parent Teacher Conferences 7:30am-3pm	28
29	30	31				
				<ul style="list-style-type: none"> • BS - Broad Street • NS - Northside • SP - Shepherdstown • UA - Upper Allen • KA - Kindergarten • EW - Elmwood • MS - Middle School • HS - High School 		



NOVEMBER 2023



Visit the District Activity Calendar at www.mbgd.org for an up-to-date listing of all district events and activities and gomechanicsburg.com for all Athletic schedules and livestream opportunities



Rachel Becking

2 O'Clock Fog

Su

Mo

Tu

We

Th

Fr

Sa

			01 End of Marking Period 1 (Grades 6-12)	02 NS-Picture Day BS-Community Dinner 5-6:30pm	03	04
05	06 PD Day NO STUDENTS (K-12)	07 BS-PTO Mtg 6:30pm NS-PTO Mtg 7pm UA-PTO Mtg 7pm	08 EARLY DISMISSAL (6-8 ONLY) MS-Parent Teacher Conferences	09 EARLY DISMISSAL (6-8 ONLY) MS-Parent Teacher Conferences	10	11
12	13	14 School Board Meeting 7pm	15 BS-Picture Day UA-Picture Retakes	16 SP-Picture Day	17	18
19	20 EW-PTO Mtg 7pm UA-World Expo Day	21 KA-PTO Mtg 6:30pm	22 In-Service Day NO STUDENTS (K-12)	23 SCHOOL CLOSED	24 SCHOOL CLOSED	25
26	27 SCHOOL CLOSED	28 Finance & Facilities Meeting 6pm School Board Work Session 7pm	29 End of Trimester 1 (Grades K-5)	30 EW-Picture Retakes		
				<ul style="list-style-type: none"> • BS - Broad Street • NS - Northside • SP - Shepherdstown • UA - Upper Allen • KA - Kindergarten • EW - Elmwood • MS - Middle School • HS - High School 		

DECEMBER
2023



Katelyn McKenney

Check the Box



Visit the District Activity Calendar at www.mbgdsd.org for an up-to-date listing of all district events and activities and gomechanicsburg.com for all Athletic schedules and livestream opportunities



Su

Mo

Tu

We

Th

Fr

Sa

					01	02
03	04	05 UA-PTO Mtg 7pm	06	07	08	09
10	11	12 School Board Meeting 7pm	13	14	15	16
17	18	19	20	21	22 SCHOOL CLOSED	23
24	25 SCHOOL CLOSED	26 SCHOOL CLOSED	27 SCHOOL CLOSED	28 SCHOOL CLOSED	29 SCHOOL CLOSED	30
31				<ul style="list-style-type: none"> • BS - Broad Street • NS - Northside • SP - Shepherdstown • UA - Upper Allen • KA - Kindergarten • EW - Elmwood • MS - Middle School • HS - High School 		



Annabelle Hoover

In a Mystic Land

JANUARY
2024

Visit the District Activity Calendar at www.mbgd.org for an up-to-date listing of all district events and activities and gomechanicsburg.com for all Athletic schedules and livestream opportunities



Su

Mo

Tu

We

Th

Fr

Sa

	01 SCHOOL CLOSED	02 In-Service Day NO STUDENTS (K-12)	03	04	05	06
07	08	09 School Board Meeting 7pm SP-Picture Retakes NS-Picture Retakes NS-PTO Mtg 7pm UA-PTO Mtg 7pm	10 BS-Picture Retakes SP-PTO Mtg 7pm	11	12	13
14	15 SCHOOL CLOSED	16 ACT 80 DAY NO STUDENTS (K-12) KA-PTO Mtg 6:30pm	17	18	19 UA-Family Glow Party 6:30-8pm	20
21	22 EW-PTO Mtg 7pm	23 Finance & Facilities Meeting 6pm School Board Work Session 7pm End of Marking Period 2 (Grades 6-12)	24 ACT 80 DAY NO STUDENTS (9-12 ONLY)	25	26	27
28	29	30	31			
				<ul style="list-style-type: none"> • BS - Broad Street • NS - Northside • SP - Shepherdstown • UA - Upper Allen • KA - Kindergarten • EW - Elmwood • MS - Middle School • HS - High School 		



Zeitun Hassan

Self-Portrait



Visit the District Activity Calendar at www.mbgd.org for an up-to-date listing of all district events and activities and gomechanicsburg.com for all Athletic schedules and livestream opportunities

F E B R U A R Y
2 0 2 4

Su

Mo

Tu

We

Th

Fr

Sa

				01	02	03 BS-PTO Skating Party 4-6pm
04	05	06 NS-PTO Mtg 7pm UA-PTO Mtg 7pm	07	08 NS-Family Fun Night 6-7pm MS-Parent Teacher Conferences HS-Spring Back to School Night	09	10
11	12	13 School Board Meeting 7pm	14	15 EARLY DISMISSAL (K-5 ONLY) K-5 Parent Teacher Conferences 11am-6pm	16 ACT 80 DAY NO STUDENTS (K-12)	17
18	19 SCHOOL CLOSED	20 KA-PTO Mtg 6:30pm	21	22 UA-STEM Night 6:30-8pm	23	24
25	26 EW-PTO Mtg 7pm	27 Finance & Facilities Meeting 6pm School Board Work Session 7pm	28	29 HS-Musical- 6:30pm Mama Mia!		
				<ul style="list-style-type: none"> • BS - Broad Street • NS - Northside • SP - Shepherdstown • UA - Upper Allen • KA - Kindergarten • EW - Elmwood • MS - Middle School • HS - High School 		



Emily Hammaker

Blooming



Visit the District Activity Calendar at www.mbgdsd.org for an up-to-date listing of all district events and activities and gomechanicsburg.com for all Athletic schedules and livestream opportunities

M A R C H
2 0 2 4

Su

Mo

Tu

We

Th

Fr

Sa

					01 HS-Musical-7:30pm Mama Mia!	02 HS-Musical-7:30pm Mama Mia!
03 HS-Musical-2pm Mama Mia!	04	05 BS-PTO Mtg 6:30pm NS-PTO Mtg 7pm UA-PTO Mtg 7pm	06 End of Trimester 2 (Grades K-5)	07 Elementary Family Arts Night 6-7:30pm	08	09
10	11	12 School Board Meeting 7pm	13 SP-PTO Mtg 7pm	14 KA-Bedtime Story Hour 6-7:30pm	15 PD Day NO STUDENTS (K-12)	16
17	18	19 KA-PTO Mtg 6:30pm	20	21 HS-Parent Teacher Conferences	22	23
24	25 EW-PTO Mtg 7pm	26 Finance & Facilities Meeting 6pm School Board Work Session 7pm EW-5th Grade Science Fair 6pm	27	28 SCHOOL CLOSED Make-Up Day (if necessary)	29 SCHOOL CLOSED	30
31				<ul style="list-style-type: none"> • BS - Broad Street • NS - Northside • SP - Shepherdstown • UA - Upper Allen • KA - Kindergarten • EW - Elmwood • MS - Middle School • HS - High School 		



Visit the District Activity Calendar at www.mbgd.org for an up-to-date listing of all district events and activities and gomechanicsburg.com for all Athletic schedules and livestream opportunities

A P R I L
2 0 2 4



Elyas Myers

Reflective

Su

Mo

Tu

We

Th

Fr

Sa

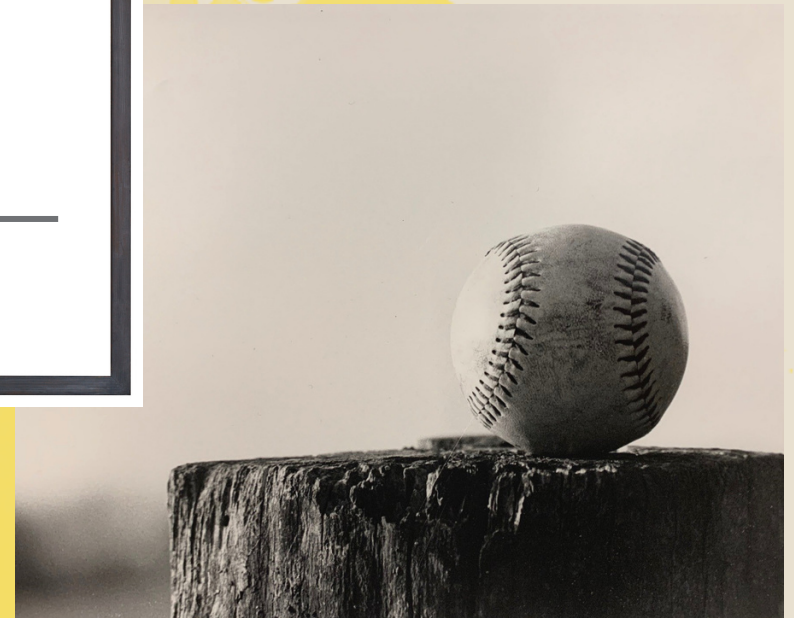
	01 SCHOOL CLOSED	02 NS-PTO Mtg 7pm UA-PTO Mtg 7pm End of Marking Period 3 (Grades 6-12)	03	04 EW-4th Grade Wonder Showcase 6-7pm	05	06
07	08	09 School Board Meeting 7pm	10 SP-PTO Mtg 7pm	11	12	13
14	15	16 KA-PTO Mtg 6:30pm	17	18 BS,NS,SP,UA-Open House 6-7pm	19 ACT 80 DAY NO STUDENTS (K-12)	20
21	22 EW-PTO Mtg 7pm	23 Finance & Facilities Meeting 6pm School Board Work Session 7pm	24	25	26	27
PSSA ELA Testing Window (Grades 3-8)						
28	29	30				
PSSA Math Testing Window (Grades 3-8) & PSSA Science Testing Window (Grades 4 & 8)						
				<ul style="list-style-type: none"> • BS - Broad Street • NS - Northside • SP - Shepherdstown • UA - Upper Allen • KA - Kindergarten • EW - Elmwood • MS - Middle School • HS - High School 		

M A Y
2 0 2 4



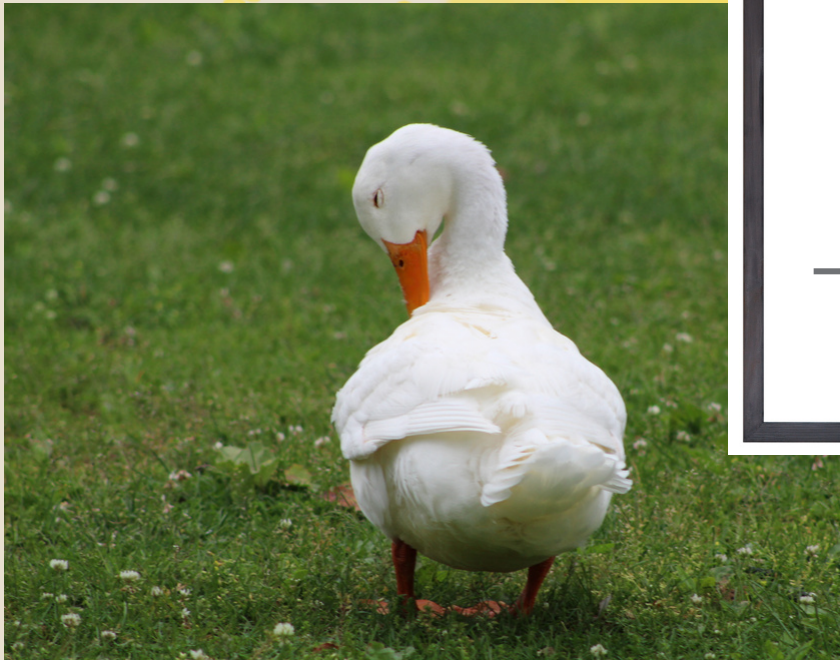
Bryce Gesford

*Baseball is, was,
and always will be...*



Mackinley Giblin

Bashful



Visit the District Activity
Calendar at
www.mbgd.org for an
up-to-date listing of all
district events and
activities and
gomechanicsburg.com
for all Athletic schedules
and livestream
opportunities



Su

Mo

Tu

We

Th

Fr

Sa

			01	02	03 BS-May Fair 5-7pm	04
PSSA Math Testing Window (Grades 3-8) & PSSA Science Testing Window (Grades 4 & 8)						
05 HS-Senior Recognition Art Show Opening Reception 1-3pm (Art Center)	06 PD Day NO STUDENTS (K-12)	07 NS-PTO Mtg 7pm UA-PTO Mtg 7pm	08 SP-PTO Mtg 7pm	09	10	11
PSSA Math Testing Window (Grades 3-8) & PSSA Science Testing Window (Grades 4 & 8)						
12	13	14 School Board Meeting 7pm	15	16	17 BS-Field Day	18
Keystone Exam Testing Window (Algebra, Biology, English 11)						
19 HS-District Art Show Opening Reception 1-3pm (Art Center)	20 EW-PTO Mtg 7pm	21 KA-PTO Mtg 6:30pm	22	23	24 EW-4th Grade Field Day UA-Field Day SP-Field Day	25
Keystone Exam Testing Window (Algebra, Biology, English 11)						
26	27 SCHOOL CLOSED	28 Finance & Facilities Meeting 6pm School Board Work Session 7pm	29	30	31 EW-5th Grade Field Day	
				<ul style="list-style-type: none"> • BS - Broad Street • NS - Northside • SP - Shepherdstown • UA - Upper Allen • KA - Kindergarten • EW - Elmwood • MS - Middle School • HS - High School 		



Visit the District Activity Calendar at www.mbgdsd.org for an up-to-date listing of all district events and activities and gomechanicsburg.com for all Athletic schedules and livestream opportunities

J U N E
2 0 2 4



Habiba Abouelnagah

Untitled

Su

Mo

Tu

We

Th

Fr

Sa

						01
02	03	04	05	06 LAST DAY OF SCHOOL	07	08
09	10	11 School Board Meeting 7pm	12	13	14	15
16	17	18	19	20	21	22
23	24	25 Finance & Facilities Meeting 6pm School Board Work Session 7pm	26	27	28	29
30				<ul style="list-style-type: none"> • BS - Broad Street • NS - Northside • SP - Shepherdstown • UA - Upper Allen • KA - Kindergarten • EW - Elmwood • MS - Middle School • HS - High School 		

To see detailed information on the following subjects, please visit our website at www.mbgdsd.org.
On the MASD website, click on "About Us" and then "District Handbook".

ACADEMICS

- Catching Kids Up
- Commencement Ceremonies
- Cumberland Perry Career & Technology Center
- Daily Schedule
- Direct Screening Measures
- Field Trips
- Grading
- Interim Academic Reports
- Promotion Policy
- Testing Program

ATHLETICS

- Athletic Uniform & Equipment
- Athletic Schedules
- Extra-Curricular Eligibility
- NCAA Academic/Athletic Eligibility

ATTENDANCE/REGISTRATION

- Attendance
- Attendance - Extra-Curricular Implications
- Excusing or Releasing Students
- Make-up Days
- Registration
- Withdrawals/Transfers

COMMUNICATIONS & NOTIFICATIONS

- Collection of Information for Marketing
- Communication & Sapphire Notification
- Non-Discrimination Policy
- Post-Secondary Institutions & Recruitment

DISTRICT SERVICES

- Food Services
- Student Transportation

HEALTH SERVICES

- Children's Health Insurance Program (CHIP)
- Immunization and Medical Requirements
- Medication Policy
- Overview of Health Services Program
- Student Insurance

PARENT & COMMUNITY

- Adult Education and Recreation Program
- Parent-Teacher Groups
- Senior Citizens Pass
- Volunteers

SCHOOL SAFETY

- Automatic External Defibrillator Program (AED)
- Emergency Drills
- Integrated Pest Management
- Safety Patrols
- School Emergency Guide
- School Visitors
- Weather Emergencies

STUDENT RESPONSIBILITIES & DISCIPLINE

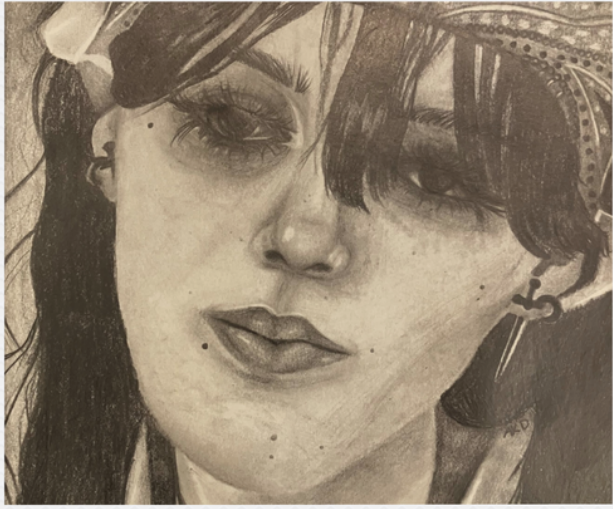
- Bullying/Cyberbullying
- Code of Conduct
- Dress Code
- Lost or Damaged Equipment & Materials
- Use of Tobacco Products
- Weapons & Act 26 Violations

STUDENT SERVICES

- Capital Area Intermediate Unit Services
- Counseling Services
- Early Intervention for Preschool Children
- Federal Educational Rights and Privacy Act (FERPA)
- Helping Agencies in Cumberland County
- Homebound Instruction
- McKinney Vento Act
- No Child Left Behind Act
- Protected Handicapped Students
- Protection of Pupil Rights Amendment (PPRA)
- Special Services
- Wellness Program

DIRECTORY INFORMATION

- Central Office and Schools
- Administration
- Board of School Directors



Audrey Dorsey



Tacara Blosser



Kyla Mitchell



Emily Kresge

Mechanicsburg Area School District
600 S Norway Street, 2nd Floor
Mechanicsburg, PA 17055

